

ANNIE PHOTO GRAPHS LEIBOVITZ



INTRODUCTION BY TOM WOLFE

Meryl Streep



Johnny Cash's family reunion



Moonlighting

The many influences of form...

Annie Leibovitz



Ila Borders (born 1975): Baseball pitcher Ila Borders started playing girls' softball in her hometown of Downey, Calif., but by age 10 she was playing in boys' Little League. She received the first college baseball scholarship awarded to a woman, and in 1998, as a starter for the Duluth-Superior Dukes, became the first woman to pitch an entire season on a men's professional team. photograph by annie leibovitz

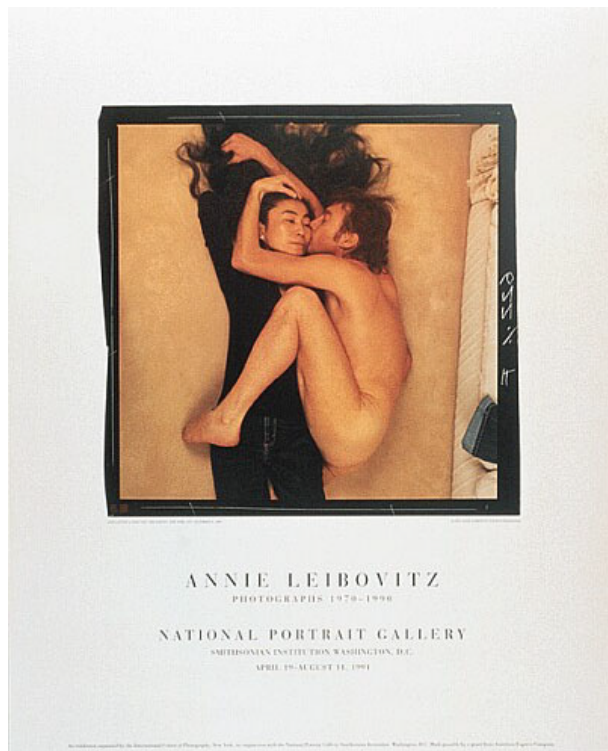
That image reminds me of you, I can see her determination and focus. Out of all of my influences, Annie Leibovitz is the most influential. She is talented beyond belief! She is one of the most prolific artists I know and her images are always stunning. I am going to fill up a lot of space with her pictures, 'cause I like them so much. There is a written interview that expresses exactly who she is, if you would go to this link: <http://fototapeta.art.pl/fti-ale.html>

Nobody can say it better than she. The interview is kinda long but I think you will relate to it, so just read it now and then. She is an incredible woman with soooo much insight and imagination, I know you will love her.

the White Stripes



Influences of form • Annie Leibovitz



John & Yoko



Cindy Crawford

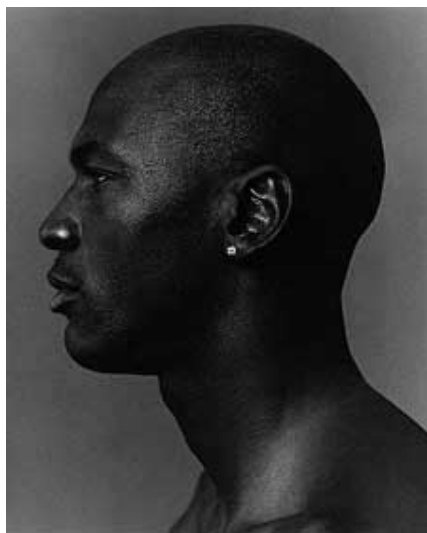


Mary J. Blige

The many influences of form...

Annie Leibovitz (continued)

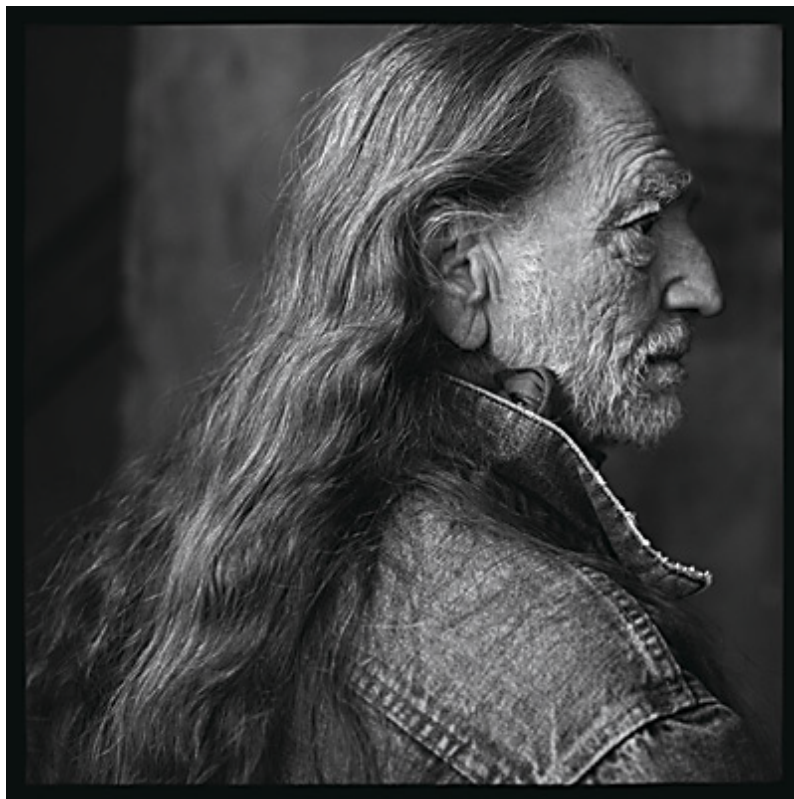
The portrait of John Lennon is my favorite shot of Annie's. And one of my all time favorite images ever. They say, "a picture is worth a thousand words." Of course, that is just a cliché. In this instant she has captured a man's entire life. A masterful man at that. This was the last photograph taken of John Lennon. The image is actually rotated 90 degrees clockwise, as if he were riding a rocket to the stars. And holding on for dear life.



Michael Jordan



Iggy Pop

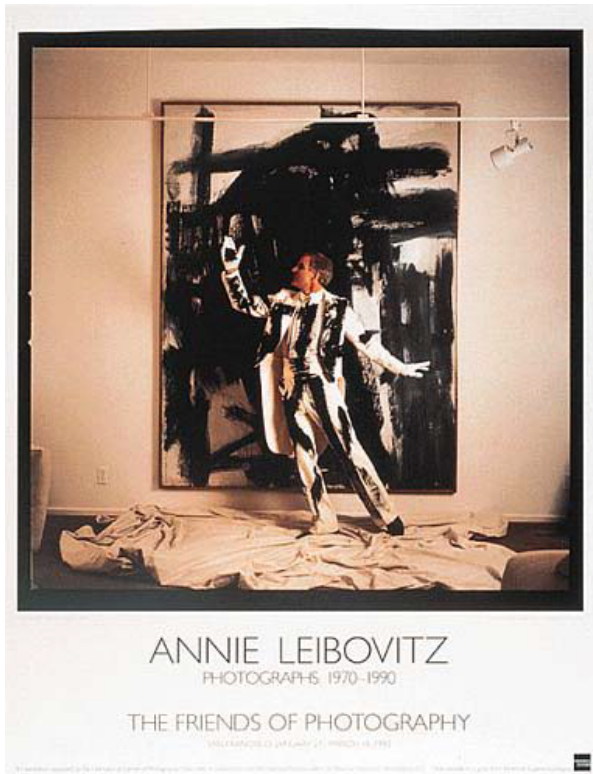


Willie Nelson

The many influences of form...

Annie Leibovitz (continued)

Her whimsical portrayal of Steve Martin is dead on. She just does it every time. Below is her portrait of Keith Haring, an artist who's artwork we have all seen just may not have known who the artist was. She hid the man within his art...clever indeed.



Steve Martin



Keith Haring



Keith Richards



Dan Aykroyd and John Belushi "the blues brothers"



Annie Leibovitz is also very well known for her editorial photography as well. She is a contributing photographer to *Vanity Fair*, and her layouts are always a production. Check out the beautiful porcelain doll to the left. It takes an incredible imagination to come up with that and great determination to make it happen.

